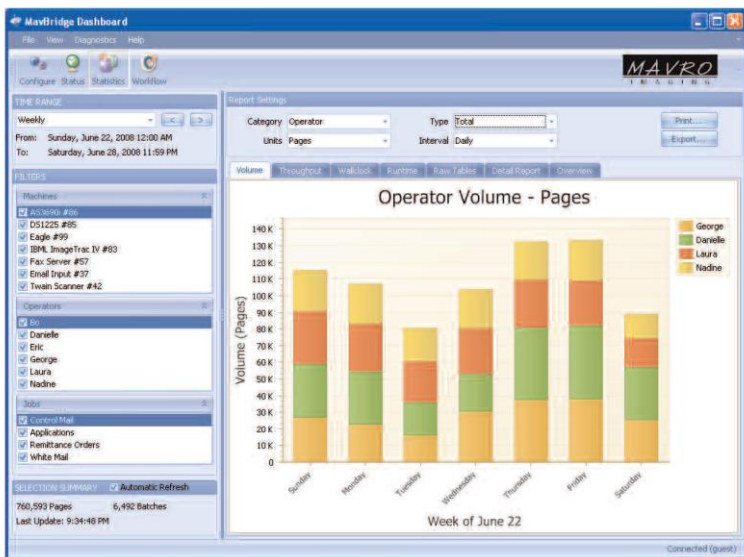


What's in Your Envelope?

MavBridge™ Statistics will assemble data in a meaningful format to help you make informed processing decisions. No more guess work, no estimates, just the facts. Know exactly what your throughput was last year, last month, yesterday and today. What are the opportunities to improve productivity and reduce costs at your site? Knowing exactly what arrives in your envelope is a good place to start.



MavBridge™ Dashboard provides mailroom productivity at a glance.

MavBridge Statistics will help the most experienced mailroom and scanning center managers answer the following questions with confidence.

- ✓ How do you plan for processing tomorrow's mail without knowing what has happened historically?
- ✓ Do you know exactly what productivity levels you are achieving before and after investing in mailroom automation?
- ✓ Can you verify the productivity improvements achieved during the last year, last month, last week or even yesterday?

Machine Productivity

Track scanner productivity by active run time and by total wall clock time. Compare machine throughput by shift, operator or job. Discover potential scanner issues early and minimize production inefficiency.

Operator Performance

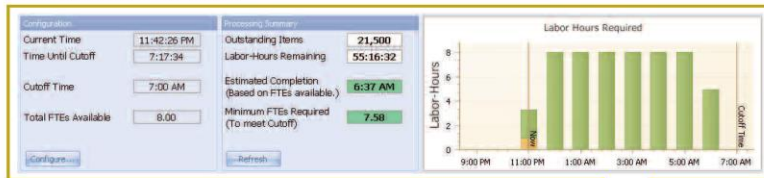
Measure operator productivity continuously. View volume, throughput, scanning time, and a variety of detailed performance data. Evaluate operators objectively against other operators, target thresholds per job, or site averages.

Volume Information

Monitor various system benchmarks such as volume by batch, transaction, page, and page type. Obtain information such as complete batch listings and jobs processed. Produce comprehensive reports that facilitate accurate internal planning, forecasting, and client billing.

Each day, completing your work depends on the coordination of machines, software, and people. A failure at any step can bring the entire system to a halt. To make matters worse, failures can easily be undetected, turning small problems into big ones. MavBridge™ Workflow Monitor continuously tracks every step in your system, ensuring that everything is running smoothly. Glitches such as stalled processes, down networks, and work queue backups are detected proactively and alerts are sent – before they become serious problems. You can be confident that Workflow Monitor is keeping a watchful eye on your system performance.

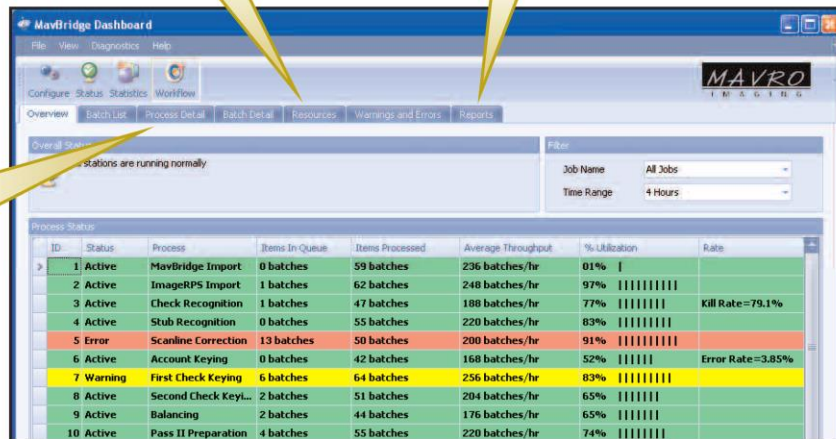
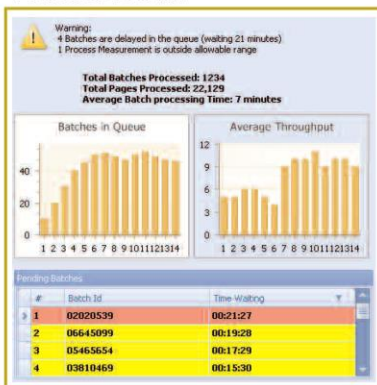
Resource Monitor



Report Card

| Processing Summary | | Labor Summary | |
|----------------------------|--------|------------------------------|--------------|
| Total Batches | 376 | Total Labor-Hours | 56:30 |
| Total Transactions | 29,426 | Average Labor Cost | \$16.00 / hr |
| Total Pages | 67,680 | Total Labor Cost | \$904.00 |
| Average Batch Size (pages) | 180 | Average Cost per Transaction | \$0.031 |
| Average Transaction Size | 2.3 | | |

Process Detail



Visual Warnings

Workflow checks all the processes in your operation to ensure system-wide integrity

- Verify all your processes are running at peak efficiency.
- Check the backlog in critical queues and assess how your operation may be impacted.
- Early detection of below par rates on automated processes, and makes the necessary adjustments.

Make significant efficiency gains and increase your performance using Resource Monitor

- Real-time tracking.
- Continuously updates the projected end-of-day for better resource planning.
- Suggests recommended resource allocations to keep things running smoothly.

A comprehensive, yet simple Report Card

- Volumes, processing rates, and transaction costs, are precisely calculated.
- All activity is tracked across all processes.
- Management visibility of operator's performance.
- Easily compare daily reports against historical trends.